

## GENERAL SAFETY RULES

### SAVE THESE INSTRUCTIONS

#### WORK AREA SAFETY

- **Keep work area clean and well lit.** Cluttered or dark areas invite accidents

#### SERVICE

- **DANGER! - Know the cylinder!** Some cylinders are spring loaded with high loads. **NEVER disassemble a cylinder without knowing what it contains.** Cylinder knowledge will reduce the risk of serious injury and/or death.
- **Have the cylinder serviced by a qualified repair person using only factory certified Quincy Ortman replacement parts.** This will ensure that the safety of the cylinder is maintained .
- **When servicing a cylinder, use only genuine Quincy Ortman Cylinders parts. Contact the nearest Quincy Ortman distributor for correct instructions.** Use of unauthorized parts or failure to follow correct maintenance instructions may create a risk of personal injury.

## SPECIFIC SAFETY RULES

- **Always wear safety glasses with side shields.** Some glasses have only impact resistant lenses. They are NOT safety glasses. Following this rule will reduce the risk of eye injury.
- **Protect your hearing. Wear hearing protection during extended periods of cylinder operations.** Following the rule will reduce the risk of minor and/or serious hearing lost.
- **Do not place cylinders near fire or heat.** This will reduce the risk of fire, explosion and/or personal injury.
- **Never use a cylinder that has been dropped or subject to a sharp blow.** A damaged cylinder and/or cylinder tubing is subject to leakage or rupture.
- **Save these instructions!** Refer to them frequently and use them to instruct others who may use this cylinder. If the cylinder is re-sold or given to someone else, give them these instructions to prevent misuse of the product and possible injury.

## ASSEMBLY LUBRICATION

Quincy Ortman recommend lubrication for the fiberglass and steel tubing is Magnalube-G<sup>®</sup> assembly grease. Available in a 3/4 oz. tube as Quincy Ortman part no. 147. **Do not forget the assembly grease when ordering the repair kits.**

## STORAGE

- All products should be stored in the vertical position to aid in preventing seal deformation and permanent set from the weight of the rod. The product **should not** be subjected to the harsh environmental conditions or be exposed to, but not limited to, any chemicals, water, fluids, extreme temperatures, dust, direct sunlight, vibration, or impacting.

## RELATED INSTRUCTIONS AND MANUALS AT [www.quincyortmancylinders.com](http://www.quincyortmancylinders.com)

- **Series Catalog.** Quincy Ortman Cylinders Document No. CAT2009-FA-A.
- **Line Card.** Quincy Ortman Cylinders Document No. LC2010-FA-A.
- **Owners Manual.** Quincy Ortman Cylinders Document No. OM2009-FA-A.
- **Maintenance & Repair Manual.** Quincy Ortman Cylinders Document No. SM2009-FA-A.
- **Long Term Storage Instructions.** Quincy Ortman Cylinders Document No. IN2009-STORE-A

**WARNING!** Servicing requires extreme care and knowledge and must be performed only by a qualified service technician. Contact the nearest Quincy Ortman Cylinders distributor for a copy of the required maintenance instructions or [go to the "Literature Download" section at www.quincyortmancylinders.com](http://www.quincyortmancylinders.com) for all your manual needs.



# FA Series

## Light Duty Cylinders

## Knife Gate Service

2-1/2" to 24" Bores

Pneumatic Service

Up to 150 psi Pressure Rating

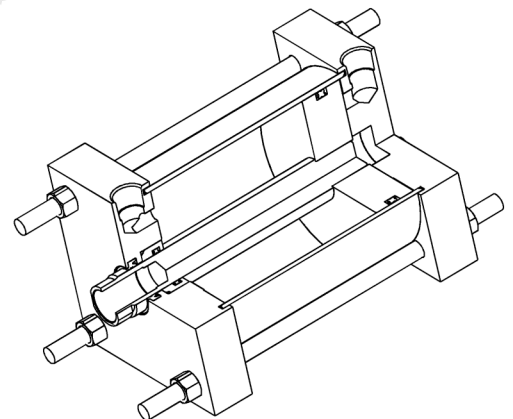
**DISASSEMBLY OF THIS PRODUCT WILL VOID ANY REMAINING WARRANTY. CONTACT THE NEAREST AUTHORIZED QUINCY ORTMAN DISTRIBUTOR FOR WARRANTY REPAIR.**

Document No. KIN2010-FA-A

2010 Edition

3501 Wismann Lane  
Quincy, IL 62305  
Ph. 217-222-7766  
Fx. 217-222-1773  
[sales@qcyinders.com](mailto:sales@qcyinders.com)

<http://www.quincyortmancylinders.com>



## REPAIR KITS AND TORQUES

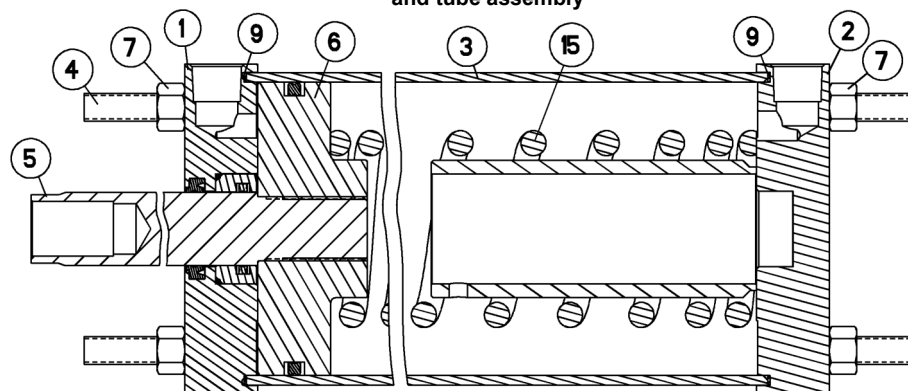
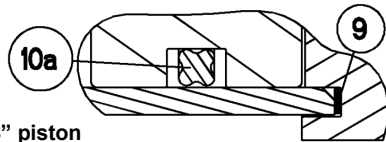
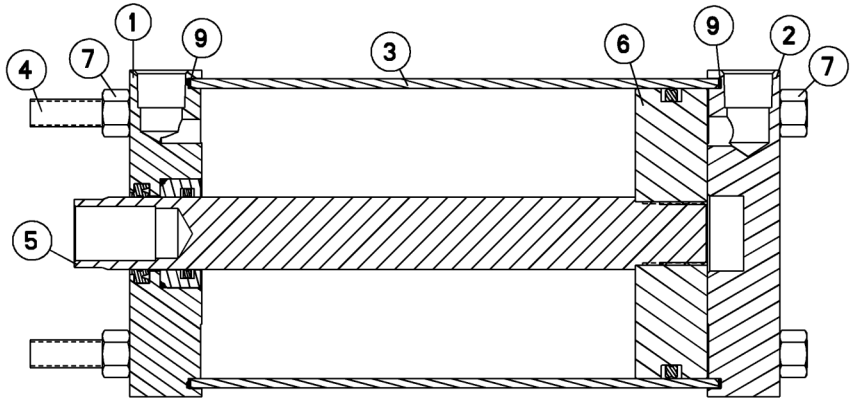
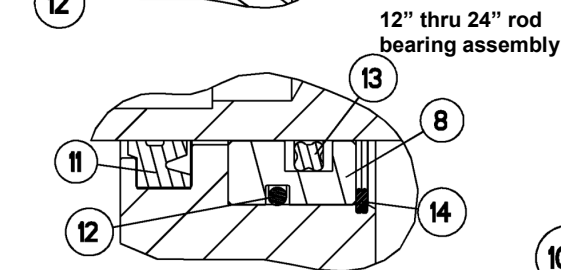
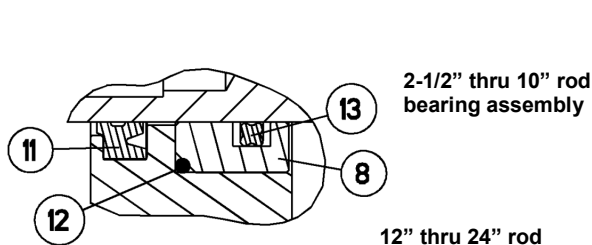
Repair Kit Numbers			Fiberglass Tube		Steel Tube	
BORE	ROD DIA	COMPLETE KIT	lb-ft	(Nm)	lb-ft	(Nm)
2-1/2	5/8	KFA0250BUNA	10	(13.5)	16	(21.7)
3-1/4	1	KFA0325BUNA	15	(20.3)	29	(39.3)
4		KFA0400BUNA	20	(27.0)		
5		KFA0500BUNA	30	(40.5)	60	(81.3)
6		KFA0600BUNA	40	(54.1)		
7		KFA0700BUNA	50	(67.6)		
8		KFA0800BUNA	65	(87.8)		
10		KFA1000BUNA-A	80	(108.5)	148	(200.7)
12		KFA1200BUNA-A	100	(135.6)		
14	KFA1400BUNA-A	135	(183.0)			
16	1-3/4	KFA1600BUNA-A	145	(196.6)	220	(298.3)
18	2	KFA1800BUNA-A	165	(223.7)	240	(325.4)
20		KFA2000BUNA	195	(264.4)	300	(406.8)
22	3	KFA2200BUNA	225	(305.1)	375	(508.4)
24	3-1/2	KFA2400BUNA	266	(360.7)	410	(555.9)

When ordering different seal materials change the material type in the service kit number:

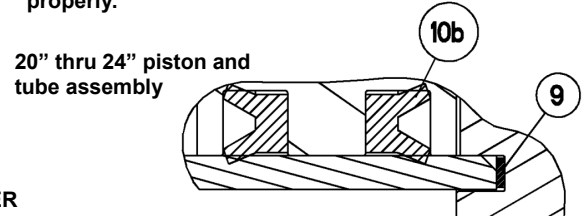
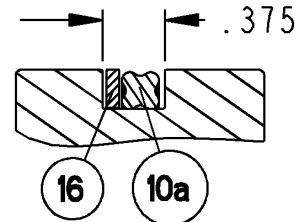
- **Complete Kits** - change to (VITON) ex. (KFA0400VITON)

## PARTS LIST

ITEM	PART DESCRIPTION (Bore Size)	SRE	DRE	SPEX	SPRE	ADJC	2-1/2-10 BORE	12-18 BORE	20-24 BORE
1	Head End Cover	1	1	1	1	1			
2	Cap End Cover	1		1	1	1			
3	Tube	1	1	1	1	1			
4	Tie Rod	4	4	4	4	4			
5	Piston Rod	1	1	1	1	1			
6	Piston	1	1	1	1	1			
7	Tie Rod Hex Nut	8	12	8	8	8			
8	Rod Bearing	1	2	1	1	1			
9	End Cover Gasket	2	2	2	2	2	X	X	X
10a	Piston Packing (2-1/2 to 18)	1	1	1	1	1	X	X	
10b	Piston Packing (20 to 24)	2	2	2	2	2			X
11	Rod Wiper	1	2	1	1	1	X	X	X
12	Rod Bearing O-ring	1	2	1	1	1		X	X
13	Rod Packing	1	2	1	1	1	X	X	X
14	Retaining Ring (12 to 24)	1	2	1	1	1		X	X
15	Spring	1		1	1				
16	Backup**	1	1	1	1	1			



**\*\*8.00 Bore Repair Kit Only.** This bore contains an extra white backup ring. This ring is to be installed next to the quad-ring seal if the seal groove width measures .375". Do **not** use the extra backup if the seal groove is smaller. Do **not** force the backup into the seal groove. The piston seal does require a percentage of movement and space to perform properly.



**DANGER!** - Know the cylinder! Some cylinders are spring loaded with high loads. NEVER disassemble a cylinder without knowing what it contains. Cylinder knowledge will reduce the risk of serious injury and/or death.