

GENERAL SAFETY RULES

SAVE THESE INSTRUCTIONS

WORK AREA SAFETY

- **Keep work area clean and well lit.** Cluttered or dark areas invite accidents

SERVICE

- **DANGER! - Know the air/oil tank!** Tank knowledge will reduce the risk of serious injury and/or death.
- **Have the air/oil tank serviced by a qualified repair person using only factory certified Ortman replacement parts.** This will ensure that the safety of the cylinder is maintained.
- **When servicing an air/oil tank, use only genuine Ortman parts.** Contact the nearest Ortman distributor for correct instructions. Use of unauthorized parts or failure to follow correct maintenance instructions may create a risk of personal injury.

SPECIFIC SAFETY RULES

- **Always wear safety glasses with side shields.** Some glasses have only impact resistant lenses. They are NOT safety glasses. Following this rule will reduce the risk of eye injury.
- **Protect your hearing. Wear hearing protection during extended periods of cylinder operations.** Following the rule will reduce the risk of minor and/or serious hearing lost.
- **Do not place air/oil tanks near fire or heat.** This will reduce the risk of fire, explosion and/or personal injury.
- **Never use a air/oil tank that has been dropped or subject to a sharp blow.** A damaged tank and/or tank tubing is subject to leakage or rupture.
- **Save these instructions!** Refer to them frequently and use them to instruct others who may use this air/oil tank. If the tank is re-sold or given to someone else, give them these instructions to prevent misuse of the product and possible injury.

ASSEMBLY LIBRICATION

Ortman recommend lubrication for the fiberglass and steel tubing is Magnalube-G[®] assembly grease. Available in a 3/4 oz. tube as Ortman part no. 147. **Do not forgot the assembly grease when ordering the repair kits.**

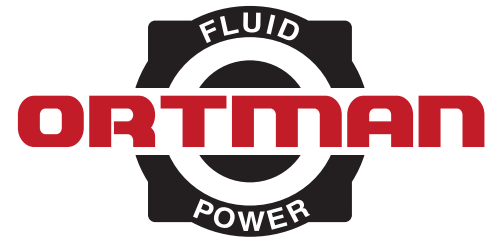
STORAGE

- The product **should not** be subjected to the harsh environmental conditions or be exposed to, but not limited to, any chemicals, water, fluids, extreme temperatures, dust, direct sunlight, vibration, or impacting.

RELATED INSTRUCTIONS AND MANUALS AT www.ortmanfluidpower.com

- **Series Catalog.** Ortman Fluid Power Document No. CAT2010-7R-A.
- **Line Card.** Ortman Fluid Power Document No. LC2010-7PR A.

WARNING! Servicing requires extreme care and knowledge and must be performed only by a qualified service technician. Contact the nearest Ortman Fluid Power distributor for a copy of the required maintenance instructions or go to the "Literature Download" section at www.quincyortmancylinders.com for all your manual needs.



7R Series

Air/Oil Tanks

Heavy Duty Construction

3-1/4" to 24" Bores

Pneumatic/Hydraulic Service

Up to 250 psi Pressure Rating

DISASSEMBLY OF THIS PROUCT WILL VOID ANY REMAINING WARRANTY. CONTACT THE NEAREST AUTHORIZED ORTMAN DISTRIBUTOR FOR WARRANTY REPAIR.

Document No. KIN2010-7R-A

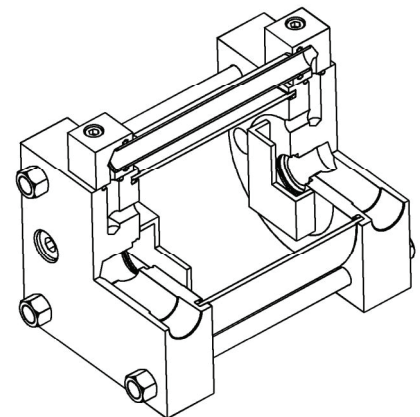
2010 Edition

1400 N. 30th Street, Suite 20

Quincy IL 62301

(844) 759-4922

sales@ortmanfp.com



REPAIR KITS AND TORQUES

Repair Kit Numbers		Tie Rod Nuts	
BORE	COMPLETE KIT	lb-ft	(Nm)
3-1/4	TS817R12000	29	(39.3)
4	TS837R12000	29	(39.3)
5	TS847R12000	60	(81.3)
6	TS857R12000	60	(81.3)
8	TS877R12000	120	(162.7)
10	TS887R12000	180	(244.0)
12	TS897R12000	180	(244.0)
14	TS907R12000	282	(382.3)

When ordering different seal materials change the last digit in the service kit number:

- **Viton** - change to (1) ex. (TS897R12001)
- **Ethylene propylene** - change to (2) ex. (TS897R12002)

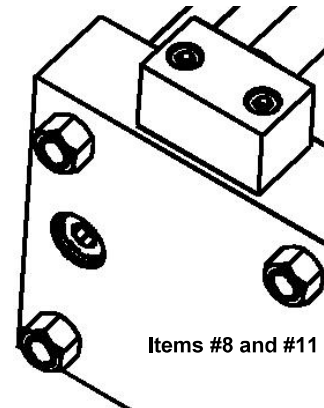
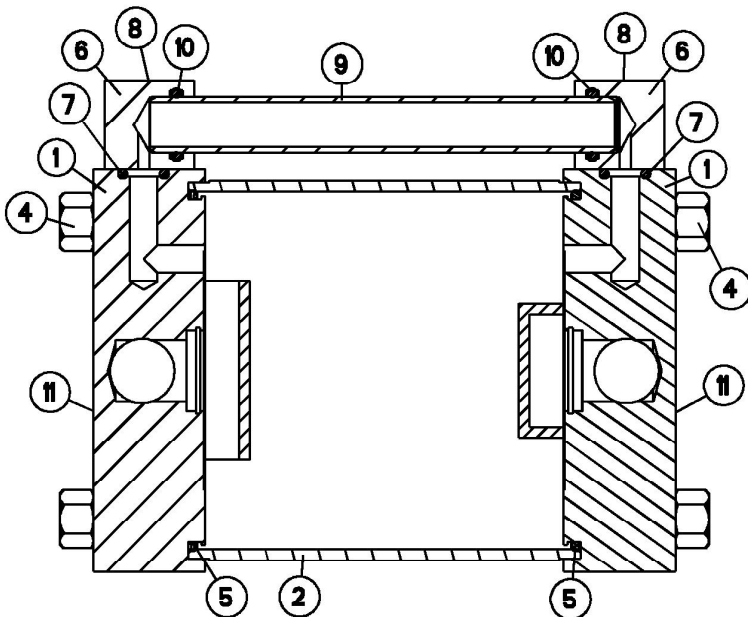
PARTS LIST

ITEM	PART DESCRIPTION	QTY	3-1/4-14 BORE
1	End Cover	2	
2	Tube	1	
3	Tie Rod	4	
4	Tie Rod Nut	8	
5	End Cover O'ring	2	X
6	Sight Gauge Block	2	
7	Block O'ring	2	X
8	Block Screws	4	
9	Sight Gauge Tube	1	
10	Site Gauge Tube O'ring	2	X
11	Plug (Fill Ports)	2	

Item #4 - Tie Rod Nuts - Quantity will change per mounting.

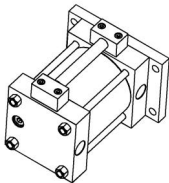
Item #8 - Block Screws - Socket Head Cap Screws, Grade 8, are used to hold the site gauge components in position.

Item #11 - Plugs - Flush style NPT plug is installed into each end's fill port.



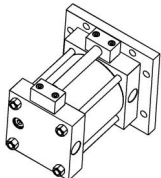
Items #8 and #11

AVAILABLE MOUNTS



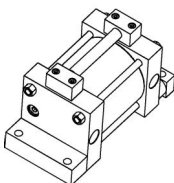
Style KA Rectangular Flange End

Rugged, steel rectangular flange with 1/16" over mounting holes for easy of mounting. Available in 3-1/4 thru 6 bore sizes.



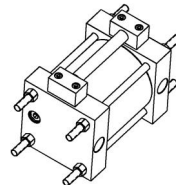
Style KAA Square Flange End

Rugged, steel square flange with 1/16" over mounting holes for easy of mounting. Available in 3-1/4 thru 6 bore sizes.



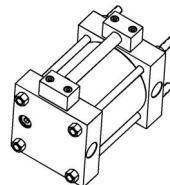
Style KCC End Foot Lugs

Steel, precision, thread on feet with 1/16" over mounting holes for easy of mounting. Available in all bore sizes.



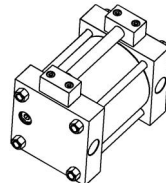
Style KL Tie Rods Extended Both Ends

Tie rod material is medium carbon steel with 100,000 psi minimum yield material allowing rugged mounting. Available in all bore sizes.



Style KN Tie Rods Extended One End

Tie rod material is medium carbon steel with 100,000 psi minimum yield material allowing rugged mounting. Available in all bore sizes.



Style KO Basic (No Mount)

The basic mounting style allows the customer to add their own mounting, side tap holes for example. Available in all bore sizes.