

GENERAL SAFETY RULES

SAVE THESE INSTRUCTIONS

WORK AREA SAFETY

- **Keep work area clean and well lit.** Cluttered or dark areas invite accidents

SERVICE

- **DANGER! - Know the cylinder!** Some cylinders are spring loaded with high loads. **NEVER disassemble a cylinder without knowing what it contains.** Cylinder knowledge will reduce the risk of serious injury and/or death.
- **Have the cylinder serviced by a qualified repair person using only factory certified Quincy Ortman replacement parts.** This will ensure that the safety of the cylinder is maintained.
- **When servicing a cylinder, use only genuine Quincy Ortman Cylinders parts. Contact the nearest Quincy Ortman distributor for correct instructions.** Use of unauthorized parts or failure to follow correct maintenance instructions may create a risk of personal injury.

SPECIFIC SAFETY RULES

- **Always wear safety glasses with side shields.** Some glasses have only impact resistant lenses. They are NOT safety glasses. Following this rule will reduce the risk of eye injury.
- **Protect your hearing. Wear hearing protection during extended periods of cylinder operations.** Following the rule will reduce the risk of minor and/or serious hearing lost.
- **Do not place cylinders near fire or heat.** This will reduce the risk of fire, explosion and/or personal injury.
- **Never use a cylinder that has been dropped or subject to a sharp blow.** A damaged cylinder and/or cylinder tubing is subject to leakage or rupture.
- **Save these instructions!** Refer to them frequently and use them to instruct others who may use this cylinder. If the cylinder is re-sold or given to someone else, give them these instructions to prevent misuse of the product and possible injury.

ASSEMBLY LUBRICATION

Quincy Ortman recommend lubrication for the fiberglass and steel tubing is Magnalube-G[®] assembly grease. Available in a 3/4 oz. tube as Quincy Ortman part no. 147. **Do not forget the assembly grease when ordering the repair kits.**

STORAGE

- All products should be stored in the vertical position to aid in preventing seal deformation and permanent set from the weight of the rod. The product **should not** be subjected to the harsh environmental conditions or be exposed to, but not limited to, any chemicals, water, fluids, extreme temperatures, dust, direct sunlight, vibration, or impacting.

RELATED INSTRUCTIONS AND MANUALS AT www.quincyortmancylinders.com

- **Series Catalog.** Quincy Ortman Cylinders Document No. CATAS07152004-A.
- **AS Line Card.** Quincy Ortman Cylinders Document No. LC2010-AS-A.
- **ASH Line Card.** Quincy Ortman Cylinders Document No. LC2010-ASH-A.
- **Long Term Storage Instructions.** Quincy Ortman Cylinders Document No. IN2009-STORE-A

WARNING! Servicing requires extreme care and knowledge and must be performed only by a qualified service technician. Contact the nearest Quincy Ortman Cylinders distributor for a copy of the required maintenance instructions or go to the "Literature Download" section at www.quincyortmancylinders.com for all your manual needs.



AS & ASH Series

Light Duty Cylinders

NFPA Service

1-1/2" to 10" Bores

Pneumatic & Hydraulic Service

Up to 250 psi Pneumatic Pressure Rating

Up to 500 psi Hydraulic Pressure Rating

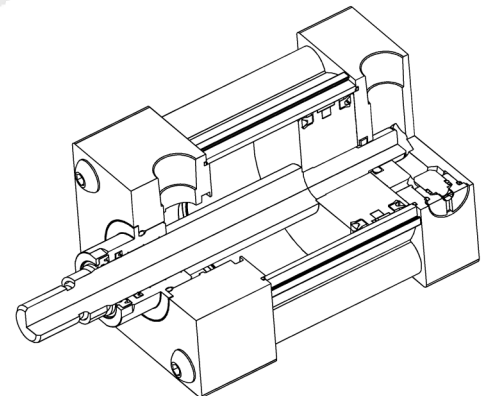
DISASSEMBLY OF THIS PRODUCT WILL VOID ANY REMAINING WARRANTY. CONTACT THE NEAREST AUTHORIZED QUINCY ORTMAN DISTRIBUTOR FOR WARRANTY REPAIR.

Document No. KIN2010-AS-A

2010 Edition

3501 Wismann Lane
Quincy, IL 62305
Ph. 217-222-7766
Fx. 217-222-1773
sales@qcyinders.com

<http://www.quincyortmancylinders.com>



REPAIR KITS AND TORQUES

| Repair Kit Numbers | | | | | Tie Nuts/Screws | | Rod Bearing | |
|--------------------|---------|-------------|-------------|-------------|-----------------|---------|-------------|--------|
| BORE | ROD DIA | RS KIT | RG KIT | TS KIT | lb-ft | (Nm) | lb-ft | (Nm) |
| 1-1/2 | 5/8 | RS00AS40310 | RG00AS30310 | TS77AS12000 | 7 | (9.5) | 18 | (24.4) |
| 2 | 5/8 | RS00AS41310 | RG00AS31310 | TS78AS12000 | 10 | (13.5) | 18 | (24.4) |
| | 1 | RS00AS41320 | RG00AS31320 | | | | 29 | (39.3) |
| 2-1/2 | 5/8 | RS00AS41310 | RG00AS31310 | TS79AS12000 | 15 | (20.3) | 18 | (24.4) |
| | 1 | RS00AS41320 | RG00AS31320 | | | | 29 | (39.3) |
| 3-1/4 | 1 | RS00AS42320 | RG00AS32320 | TS81AS12000 | 20 | (27.1) | 38 | (51.5) |
| | 1-3/8 | RS00AS42330 | RG00AS32330 | | | | | |
| 4 | 1 | RS00AS42320 | RG00AS32320 | TS83AS12000 | 55 | (74.5) | 50 | (67.8) |
| | 1-3/8 | RS00AS42330 | RG00AS32330 | | | | | |
| 5 | 1 | RS00AS42320 | RG00AS32320 | TS85AS12000 | 60 | (81.3) | 50 | (67.8) |
| | 1-3/8 | RS00AS42330 | RG00AS32330 | | | | | |
| 6 | 1-3/8 | RS00AS43330 | RG00AS33330 | TS86AS12000 | 90 | (122.0) | 50 | (67.8) |
| | 1-3/4 | RS00AS43340 | RG00AS33340 | | | | | |
| 8 | 1-3/8 | RS00AS43330 | RG00AS33330 | TS87AS12000 | 120 | (162.7) | 50 | (67.8) |
| | 1-3/4 | RS00AS43340 | RG00AS33340 | | | | | |
| 10 | 1-3/4 | RS00AS43340 | RG00AS33340 | TS88AS12000 | 120 | (162.7) | 50 | (67.8) |
| | 2 | RS00AS43350 | RG00AS33350 | | | | | |

When ordering different seal materials change the last digit in the service kit number:

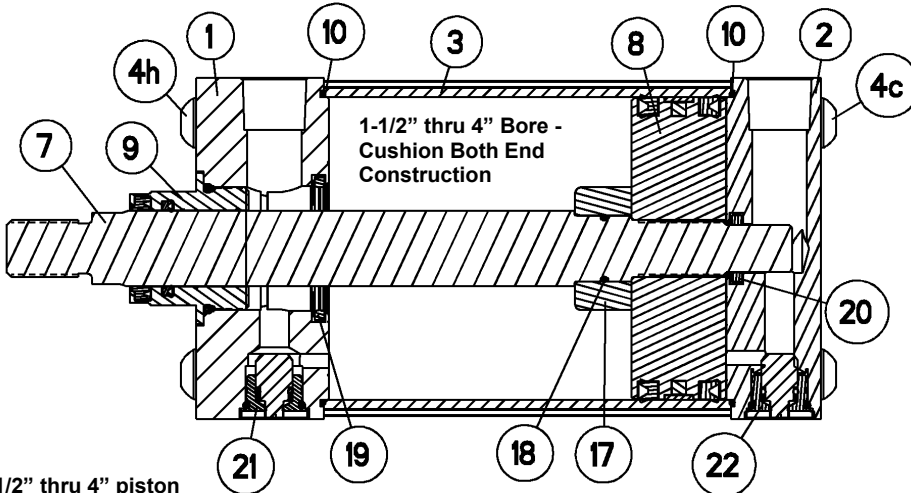
- **Viton** - change to (1) ex. (TS89AS12001)
- **Ethylene propylene** - change to (2) ex. (RG00AS31312)

PARTS LIST

| I T E M | PART DESCRIPTION (Bore Size) | S R E | D R E | R S | R G | T S |
|------------------|------------------------------------|-------------|-------------|--------|--------|--------|
| | | | | | | |
| 1 | Head End Cover | 1 | 2 | | | |
| 2 | Cap End Cover | 1 | | | | |
| 3 | Tube | 1 | 1 | | | |
| 4h | Head Screw (1-1/2 to 4) | 4 | 4 | | | |
| 4c | Cap Screw (1-1/2 to 4) | 4 | 4 | | | |
| 5 | Tie Rod (5 to 10) | 4 | 4 | | | |
| 6 | Hex Nut (5 to 10) | 8 | 8 | | | |
| 7 | Piston Rod | 1 | 1 | | | |
| 8 | Piston | 1 | 1 | | | |
| 9 | Rod Bearing | 1 | 2 | | X | |
| 10 | End Cover O-ring/Gasket** | 2 | 2 | | | X |
| 11 | Piston Packing | 1 | 2 | | | X |
| 12 | Wear band | 1 | 1 | | | X |
| 13 | Magnet (1-1/2 to 4) | 1 | 1 | | | |
| 14 | Rod Wiper | 1 | 2 | X | X | |
| 15 | Rod Bearing O-ring | 1 | 2 | X | X | |
| 16 | Rod Packing | 1 | 2 | X | X | |
| 17 | Head Cushion Nose* | 1 | 2 | | | |
| 18 | Cushion Nose O-ring* | 1 | 2 | | | |
| 19 | Head Check Ring* | 1 | 2 | | | |
| 20 | Cap Check Ring* | 1 | | | | |
| 21 | Head Cushion Adj. Asy.* | 1 | 2 | | | |
| 22 | Cap Cushion Adj. Asy.* | 1 | | | | |

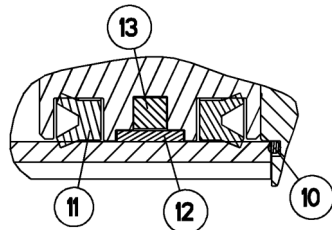
* Items included with cushion style cylinder constructions.

** 1-1/2 thru 4.00 bore uses an o'ring and the remaining bore uses a gasket material.

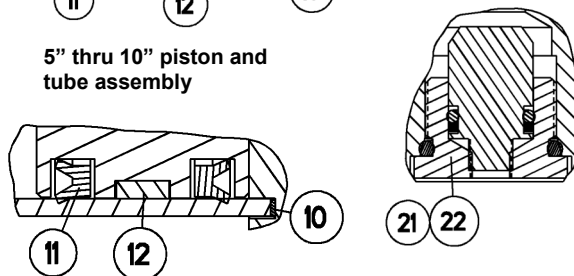


1-1/2" thru 4" piston and tube assembly

1-1/2" thru 10" rod bearing assembly



5" thru 10" piston and tube assembly



Cushion Adjustment Screw Assembly

